



KINGSDOWN SCHOOL

Kingsdown School Relationships and Sex Education Policy

Approved by:	Full Governors	Date:
Last reviewed on:	February 2025	
Next review due by:	February 2027	

Contents

1. Aims	3
2. Statutory requirements	3
3. Policy development	3
4. Definition	3
5. Curriculum	4
6. Delivery of RSE	4
7. Roles and responsibilities	4
8. Parents' right to withdraw	5
9. Training	5
10. Monitoring arrangements	5
Appendix 1: Curriculum map	6
Appendix 2: Parent form: withdrawal from sex education within RSE	11

1. Aims

The aims of relationships and sex education (RSE) at our school are to:

- Provide a framework in which sensitive discussions can take place
- Prepare pupils for puberty, and give them an understanding of sexual development and the importance of health and hygiene
- Help pupils develop feelings of self-respect, confidence and empathy
- Create a positive culture around issues of sexuality and relationships
- Teach pupils the correct vocabulary to describe themselves and their bodies

2. Statutory requirements

As a secondary academy school we must provide RSE to all pupils as per section 34 of the [Children and Social work act 2017](#).

In teaching RSE, we are required by our funding agreements to have regard to [guidance](#) issued by the secretary of state as outlined in section 403 of the [Education Act 1996](#).

At Kingsdown School we teach RSE as set out in this policy.

3. Policy development

This policy has been developed in consultation with staff, pupils and parents. The consultation and policy development process involved the following steps:

1. Review – a member of staff or working group pulled together all relevant information including relevant national and local guidance
2. Staff consultation – all school staff were given the opportunity to look at the policy and make recommendations
3. Parent/stakeholder consultation – parents and any interested parties were invited to attend a meeting about the policy
4. Pupil consultation – we investigated what exactly pupils want from their RSE
5. Ratification – once amendments were made, the policy was shared with governors and ratified

4. Definition

RSE is about the emotional, social and cultural development of pupils, and involves learning about relationships, sexual health, sexuality, healthy lifestyles, diversity and personal identity.

RSE involves a combination of sharing information, and exploring issues and values.

RSE is not about the promotion of sexual activity.

5. Curriculum

Our curriculum is set out as per Appendix 1 but we may need to adapt it as and when necessary.

We have developed the curriculum in consultation with parents, pupils and staff, taking into account the age, needs and feelings of pupils. If pupils ask questions outside the scope of this policy, teachers will respond in an appropriate manner so they are fully informed and don't seek answers online.

6. Delivery of RSE

RSE is taught within the personal, social, health and economic (PSHE) education curriculum. Biological aspects of RSE are taught within the science curriculum, and other aspects are included in religious education (RE).

RSE focuses on giving young people the information they need to help them develop healthy, nurturing relationships of all kinds including:

- Families
- Respectful relationships, including friendships
- Online and media
- Being safe
- Intimate and sexual relationships, including sexual health

For more information about our RSE curriculum, see Appendices 1 and 2.

These areas of learning are taught within the context of family life taking care to ensure that there is no stigmatisation of children based on their home circumstances (families can include single parent families, LGBT parents, families headed by grandparents, adoptive parents, foster parents/carers amongst other structures) along with reflecting sensitively that some children may have a different structure of support around them (for example: looked after children or young carers).

7. Roles and responsibilities

7.1 The Governing Board

The Governing Board will hold the headteacher to account for the implementation of this policy.

7.2 The Headteacher

The Headteacher is responsible for ensuring that RSE is taught consistently across the school, and for managing requests to withdraw pupils from [non-statutory/non-science] components of RSE (see section 8).

7.3 Staff

Staff are responsible for:

- Delivering RSE in a sensitive way
- Modeling positive attitudes to RSE
- Monitoring progress
- Responding to the needs of individual pupils

- Responding appropriately to pupils whose parents wish them to be withdrawn from the [non-statutory/non-science] components of RSE

Staff do not have the right to opt out of teaching RSE. Staff who have concerns about teaching RSE are encouraged to discuss this with the Headteacher. Tutors and science staff are responsible for teaching RSE

7.4 Students

Pupils are expected to engage fully in RSE and, when discussing issues related to RSE, treat others with respect and sensitivity.

8. Parents' right to withdraw

Parents have the right to withdraw their children from the [non-statutory/non-science] components of sex education within RSE up to and until 3 terms before the child turns 16. After this point, if the child wishes to receive sex education rather than being withdrawn, the school will arrange this.

Requests for withdrawal should be put in writing using the form found in Appendix 3 of this policy and addressed to the headteacher.

A copy of withdrawal requests will be placed in the pupil's educational record. The Headteacher will discuss the request with parents and take appropriate action.

Alternative work will be given to pupils who are withdrawn from sex education.

9. Training

Staff are trained on the delivery of RSE as part of their induction and it is included in our continuing professional development calendar.

The headteacher will also invite visitors from outside the school, such as school nurses or sexual health professionals, to provide support and training to staff teaching RSE.

10. Monitoring arrangements

The delivery of RSE is monitored by the headteacher through:

- planning scrutinies, learning walks, etc.

Pupils' development in RSE is monitored by class teachers as part of our internal assessment systems.

This policy will be reviewed by the Personal Development Coordinator every two years. At every review, the policy will be approved by the governing board

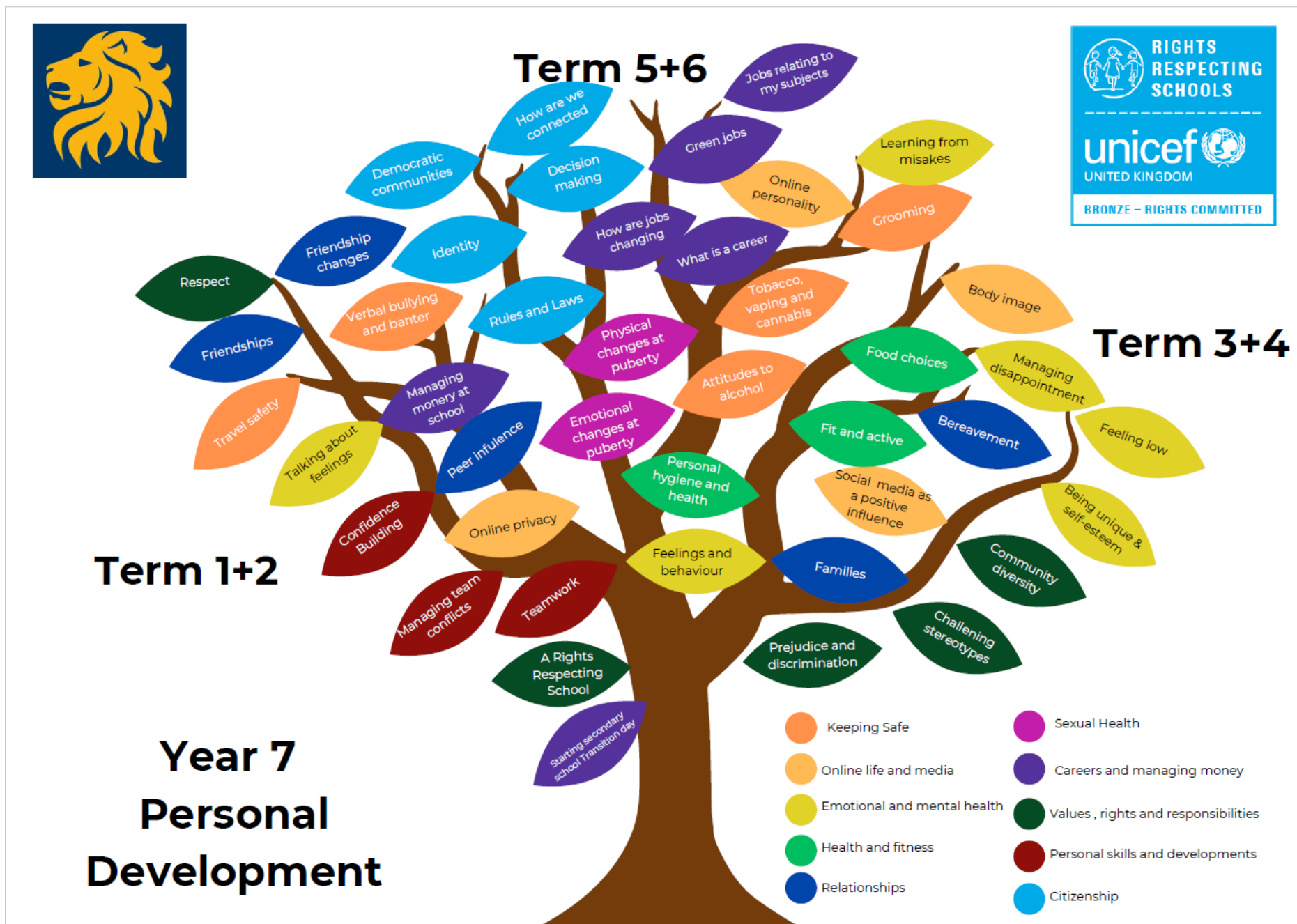
Signed by :
Emma Leigh-Bennett
Headteacher

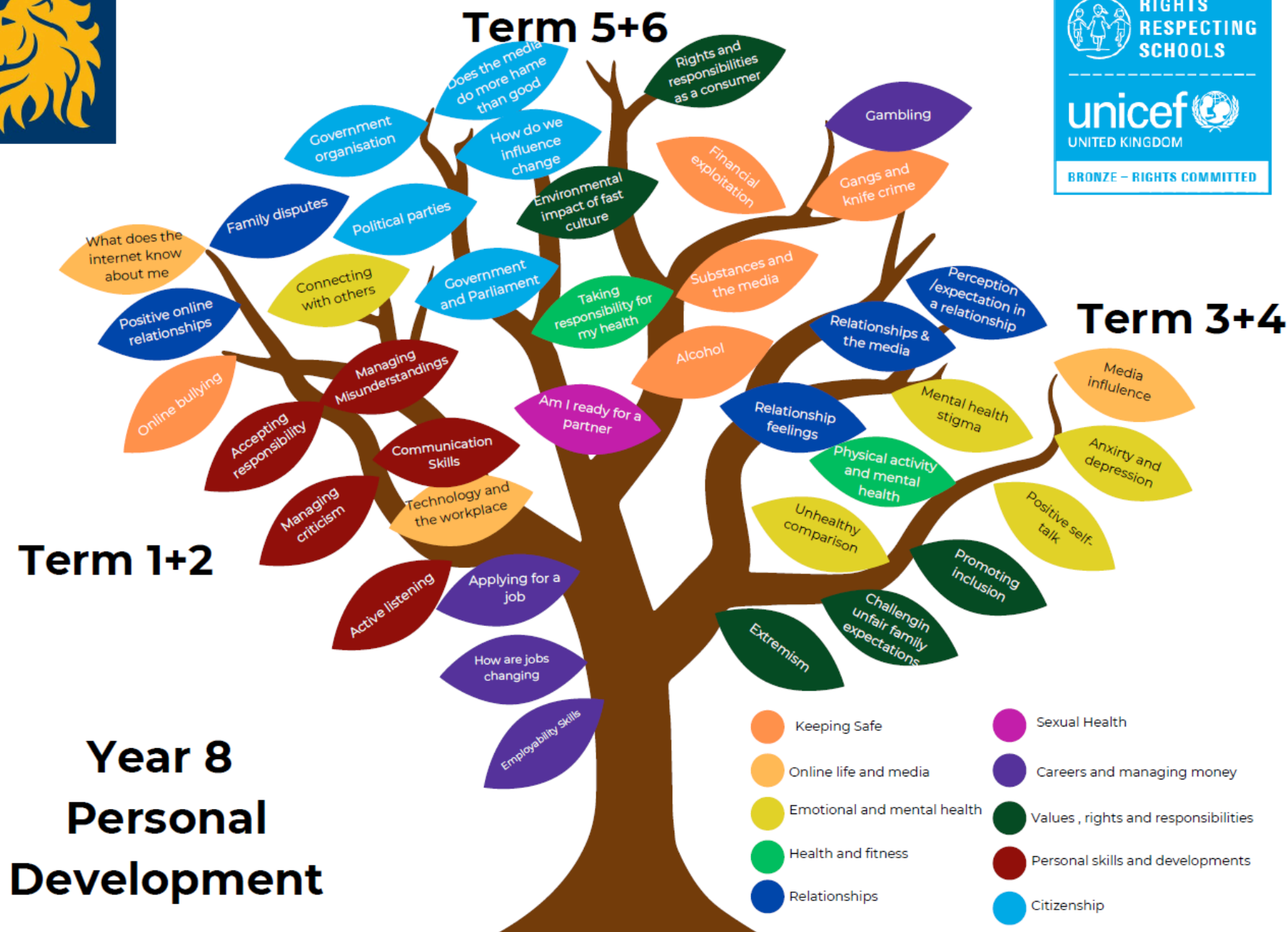
Date :

Signed by :
Vanessa Edwards
Chair of Governors

Date :

Appendix 1: Curriculum map for personal development





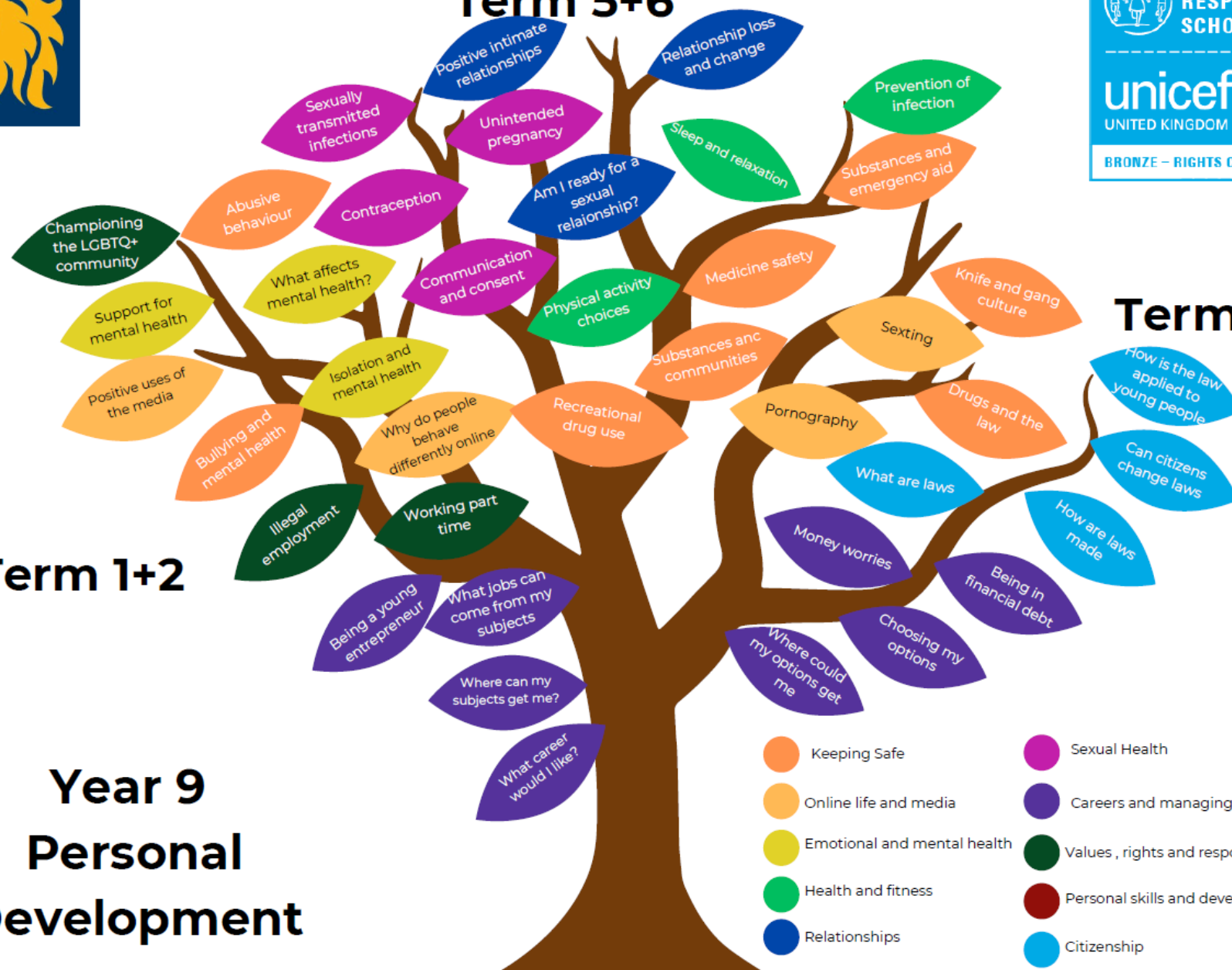


Term 5+6

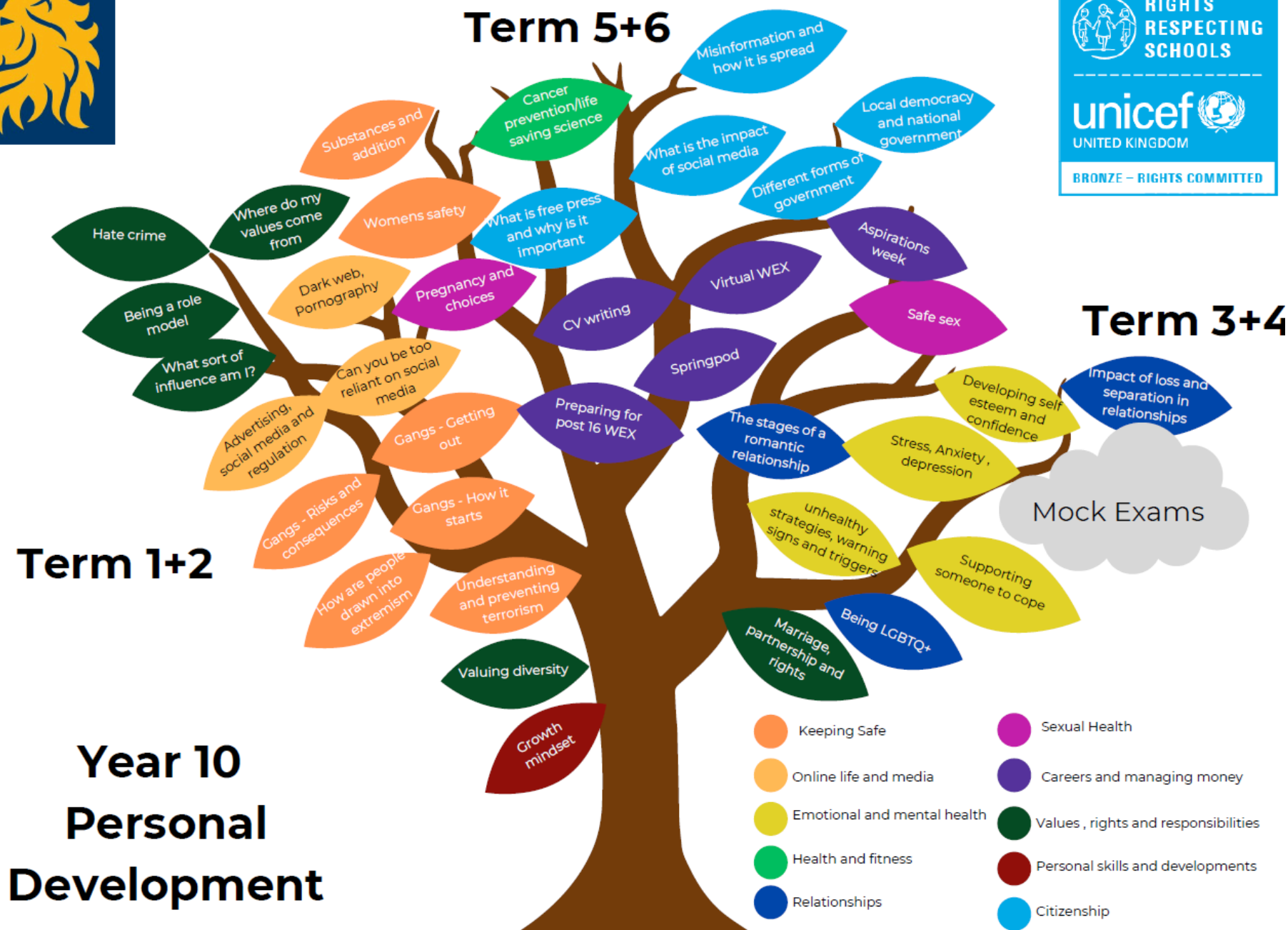
Term 3+4

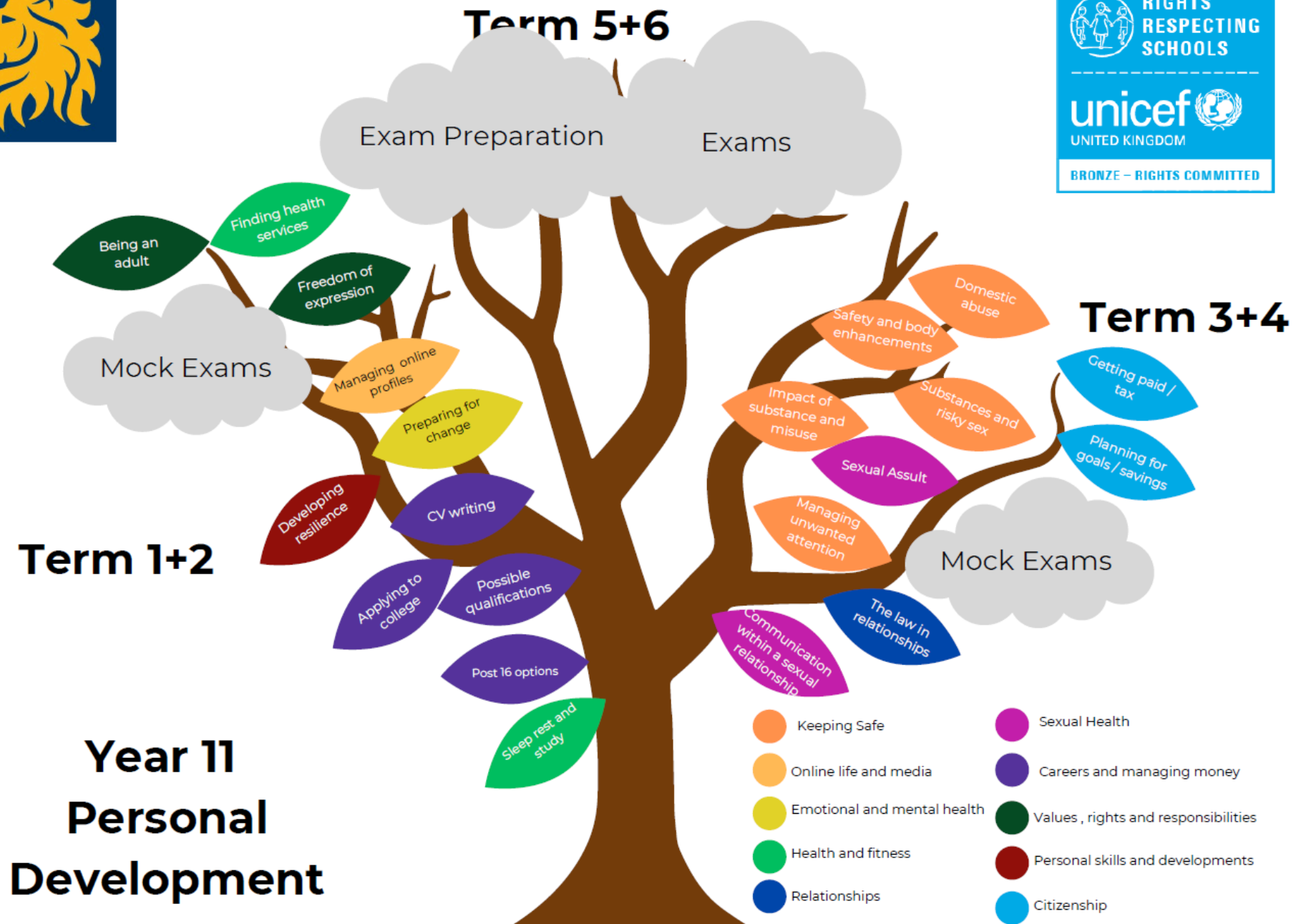
Term 1+2

Year 9 Personal Development



- Keeping Safe
- Online life and media
- Emotional and mental health
- Health and fitness
- Relationships
- Sexual Health
- Careers and managing money
- Values, rights and responsibilities
- Personal skills and developments
- Citizenship





Appendix 2: Parent form: withdrawal from sex education within RSE

TO BE COMPLETED BY PARENTS			
Name of child		Class	
Name of parent		Date	
Reason for withdrawing from sex education within relationships and sex education			
Any other information you would like the school to consider			
Parent signature			

TO BE COMPLETED BY THE SCHOOL	
Agreed actions from discussion with parents	