



It was wonderful to showcase the school at our open evening. We had over 450 visitors attend. There was a wonderful buzz around the school as each department showcased the quality of education at Kingsdown. As always our student ambassadors were amazing.



Harvest Festival

In this week's House assemblies our students heard about our commitment to the Harvest Festival event in Swindon. There is a challenge across the Houses to collect tinned and non perishable foods. Thank you for asking your child about this.



Mobile Phones

We have been pleased to see high expectations regarding uniform. Please remind your child that mobile phones must be switched off and in bags - not in blazer or trouser pockets.

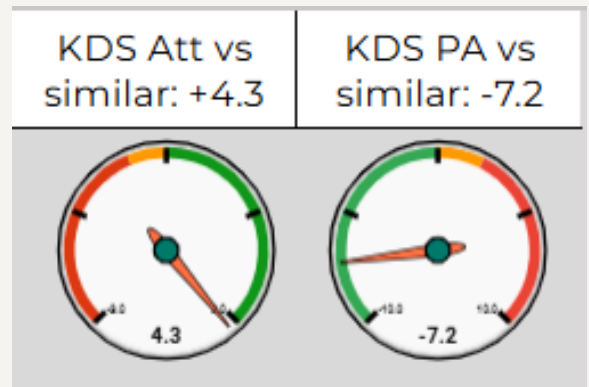


Head of Science

Our Head of Science is currently unwell and absent from school for the next month. Please be assured that we have amended the Science timetables to reduce disruption and are sourcing supply cover. Any questions, please contact me at head@kingsdownschool.co.uk

Attendance Dial

We wanted to share with you comparable data on attendance across all of the RLT schools. As you can see Kingsdown are +4.3% ahead of other comparable schools.



At Kingsdown it is possible to have lessons on a range of instruments including Piano, Guitar, Drums and voice. Lessons are provided by teachers from the Swindon Music Cooperative. If you are interested in lessons for your child please follow the QR code or get in touch with our Head of Music, Mr Wicker.



Application form



More information

'ROAR' Newsletter

Please see our second attachment of our first edition of 'ROAR' our student led newsletter, in this you will find more information on our clubs and opportunities.

Year 10 Artwork by Merjo



House Shields

Introducing our new House Shields, more information on individual houses can be found in the 'ROAR' newsletter.



Future events and important dates

- 16.10.25 - Year 7 - Meet the tutor evening - Main Hall - 5.30pm - 6.30pm - no booking required
- 16.10.25 - Year 8 Football Tournament Foundation Park
- 17.10.25 - GCSE Music Festival Swindon
- 22.10.25 - End of term 1 - school finishes at 2.45pm
- 03.11. 25 - T D Day / River Learning Trust whole school meetings - school closed to students
- 04.11. 25 - Start of term 2 - All students return at 8.15am and go to their roll call areas
- 04.11.24 - Carers Week
- 10.11.25 - Literature Festival (all week)
- 10.11.25 - Year 11 Mocks (2 weeks)

With our continued thanks.
Please do not hesitate to contact us if you have any questions or need any further information.
Please be reminded that we have a 5 day response time.

Mrs Leigh-Bennett
Headteacher



**KINGSDOWN
SCHOOL**

